

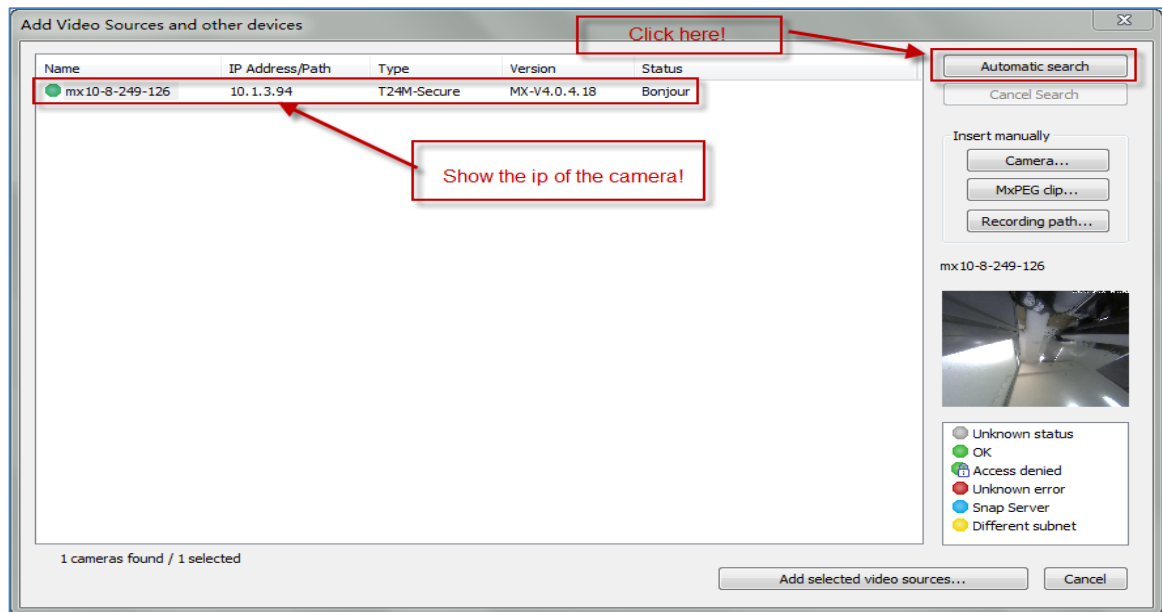
How to configure Mobotix IP door phone & IP Camera on VP530

This instruction takes Model T24M-Secure for example to introduce how to configure the mobotix IP phone and IP camera on VP530

(1) Install the Mobotix device and obtain IP address

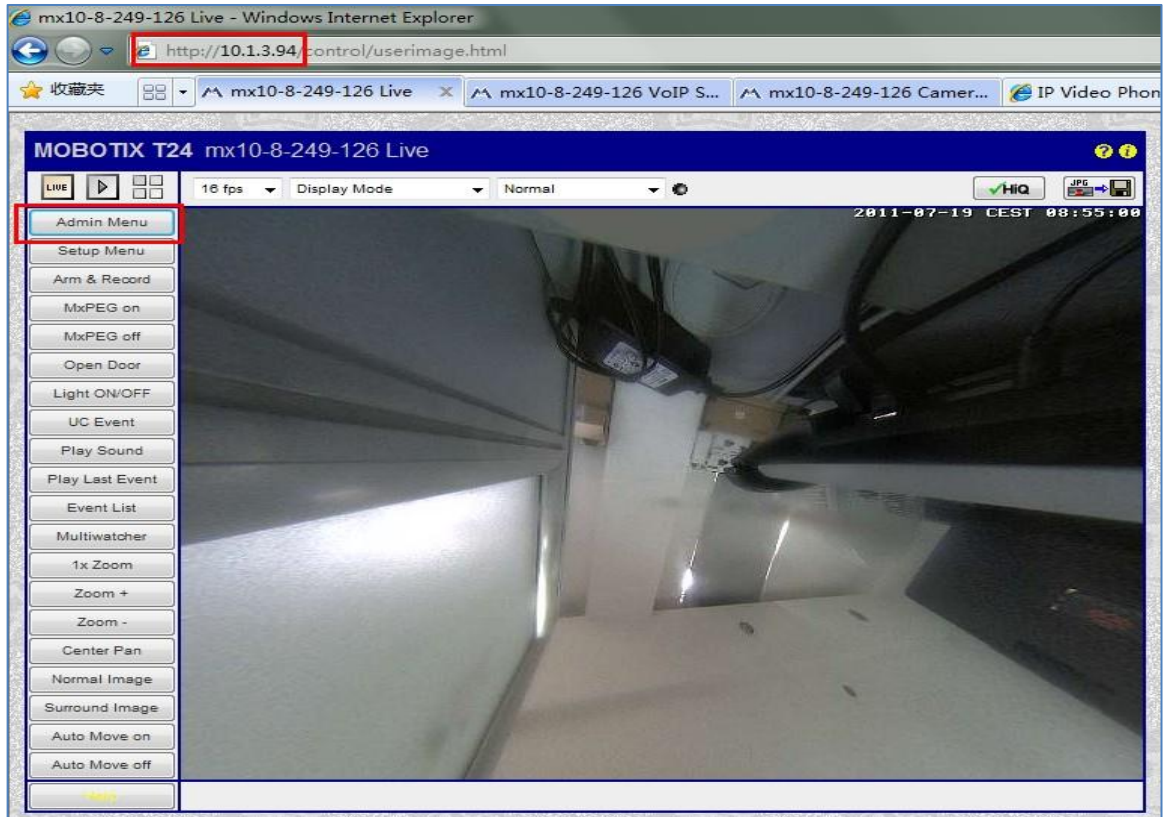
Firstly, download the related document on how to install the device from their website. Secondly, the device supports PoE mode, so it can obtain IP address if there is a DHCP Server in your local network circumstance. You can scan the IP address of the device by the tool (MxCC 2.2.3.1.) which provided on their website. Refer to the screenshot below.

Click “Automatic search”, and the tool will list all the IP address of the related Mobotix devices in the local network.



(2) Login the webpage to configure SIP Account to the Mobotix device

You can login the webpage of the device by the link: <http://IP address of the device/>, click "Admin Menu" enter the configure webpage, the default username/password are admin/admin. Refer to the screenshot list below,



(2.1) Account Setting path: Audio and Phone → Sip Server Settings

Audio and Phone

- [Loudspeaker and Microphone](#)
- [Manage Audio Messages](#)
- [Sound Profiles](#) for playing back audio files
- [VoIP Settings](#) for SIP telephony
- [Phone Profiles](#) for outgoing SIP voice calls
- [Phone Call-In](#) for incoming SIP voice calls
- [Camera Phone](#) for making direct SIP voice calls to other phones
- [SIP Server Settings](#) for configuring integrated SIP server

MOBOTIX T24 mx10-8-249-126 VoIP Settings

Setup Mode

Setup Mode: Expert Setup ▾

General Phone Settings

VoIP: Enabled ▾

Hangup on Outgoing Calls: Disabled ▾

Parallel Dialing: Enabled ▾

SIP Settings

User Name: 4322

SIP Domain: 10.2.1.199

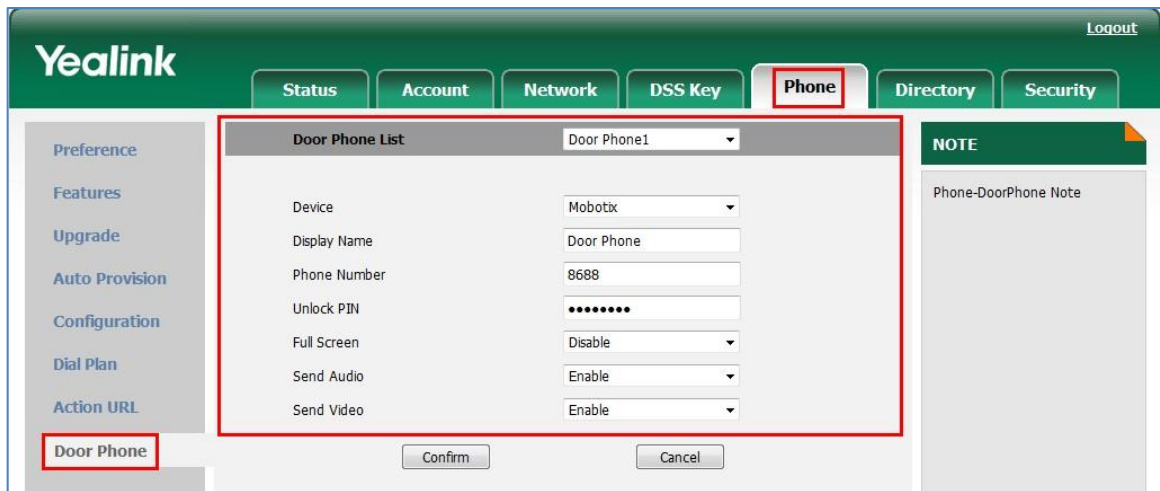
Registrar: sip:10.2.1.199:5060

SIP ID: 4322

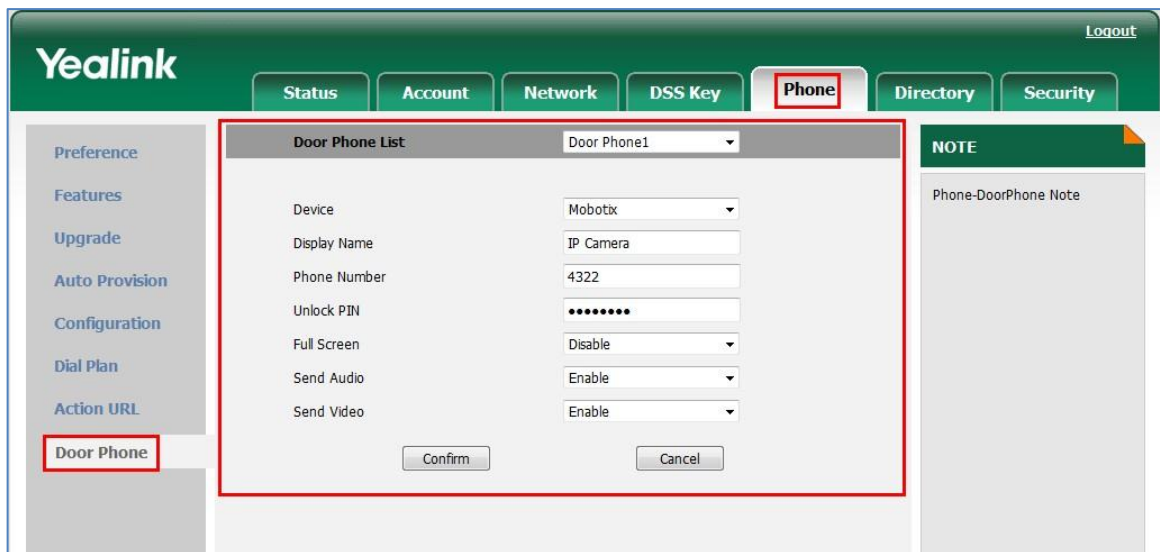
Set Factory Restore Close

(3) Configuration on VP530

(3.1) IP door phone setting path on vp530: Phone→Door Phone



(3.2) IP Camera setting path on VP530: Phone → Door phone



Noted: If you setting PIN on the door phone, for example:1234, when you make a call to the extension number of the door phone, it will alert you to input the PIN code, you must add “#” to the end of the PIN code, so as to unlock it.

(4) Setting the accounts for calling to VP530

Setting Path: Audio and Phone → Phone Profiles

MOBOTIX T24 mx10-8-249-126 Phone Profiles

Test Profile

Name: 0100 Note: **Set** the changes to a profile *before* you **test** it.

Profile Configuration

0100	Phone Number or SIP Address	Dial Attempts	Dial Timeout
<input type="checkbox"/> Delete	4321@10.2.1.199	1	20

Connection type: SIP Video

Message name: DoorBell

Confirm call with PIN code:

After the message has been sent: Listen [If you intend to use all audio modes \(Speak, Listen, Loudspeaker and Microphone\) dialog.](#)

Camera Remote Control: On **Note:** configure the remote control parameters (e.g. ...)

Hangup after: Never

(5) Setting the accounts for VP530 calling to the door phone

Setting Path: Audio and Phone → Phone Call-In

MOBOTIX T24 mx10-8-249-126 Phone Call-In

Phone Call-In Settings

Phone Call-In: VoIP Activate or deactivate VoIP phone calls **into** the camera.

Accepted Phone Numbers or SIP Addresses: sip:4321@10.2.1.199 You can enter several phone numbers or SIP addresses, one per line. On you identify the caller, the *last caller's number* is shown here: **Unknown**; th Simply call the camera from a device that you want to be able to access yo Press this button to add the SIP address: sip:4321@10.2.1.199 If you do not enter anything, all calls will be answered. For security reason

Welcome Message: - none - Select the voice message that callers will hear, e.g. to greet them or to ide

PIN Code: ●●●● You can enter a Personal Identification Number to restrict access to the ca

Audio Mode: Intercom Select the audio mode. The available audio modes depend on your [audio](#)

Intercom Settings: Threshold: Disabled Duration: Medium The **Intercom** audio mode simulates an intercom between the camera an the telephone. For muting to work properly, you can configure the following **Duration** is the minimum time during which the microphone is muted.

Hangup call after: 5 minutes Enter a limit for the maximum duration of a call.

E-Mail Profile: - disabled - After connecting to the camera successfully, you can send the last event ir sending.

(6) DSS Key setting to control the IP camera and door phone on VP530

Setting Path: Phone → DSS Key

Key	Type	Line	Label	Value	Extention	Note
DSS Key 1	Speed Dial	Auto	door phone	4322		DssKey note
DSS Key 2	Speed Dial	Auto	IP camera	4335		
DSS Key 3	None	Auto				

(7). Reference

<http://www.mobotix.com/>

<http://www.yealink.com/>